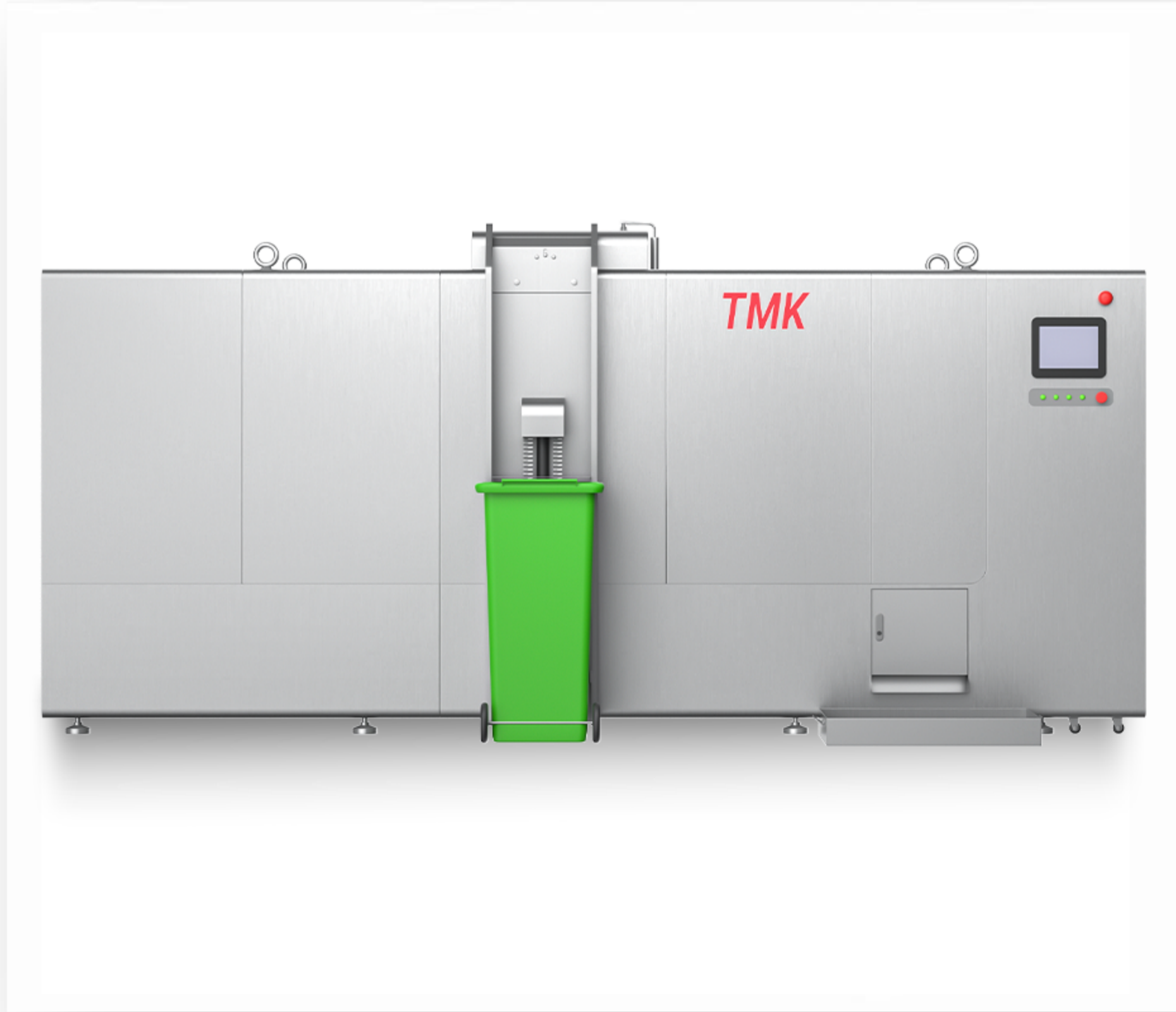


“Your Ideal Composting Partner”

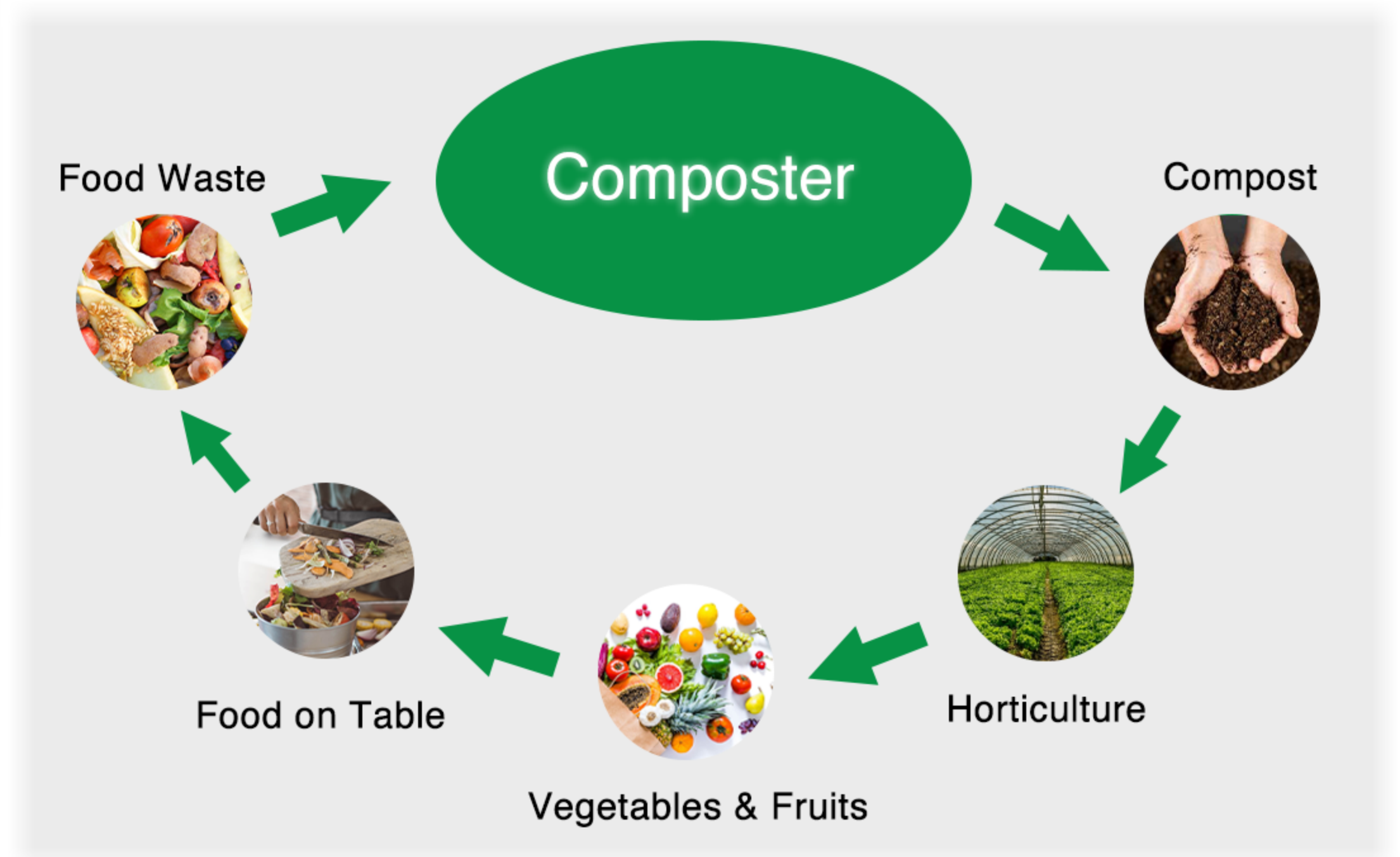
Organic Waste Composter



Turn your Food Waste, to Fertilizer

- Continuous and quick degrading process by bacterium.
- Reduce waste volume up to 90%.
- Assure odorless and pest deterrent.
- Save disposal costs.

Sustainable and socially responsible!



Features

TMK-1000 Organic Waste Compost Machine offers a premium solution to tackle the organic wet waste problem for commercial, and industrial usage. The machine can convert all kinds of wet waste and dry organic biodegradable waste into high-quality compost. The entire process is natural and biological.

Compact

- Equipped with a proper structure, is the perfect solution for industries, municipalities, municipal corporations, metro cities, industrial regions, and other organizations.

Ease to Operate

- Simply open the lid and empty food waste into the machine.
- Once the lid is shut, microbes will immediately begin composting food waste.

Benefits

- Accelerated continual process to convert food waste to compost.
- 90% MAX Reduction rate.
- Compost only needs to be removed every week.
- Energy efficient, with no wastewater discharge.

“Your Ideal Composting Partner”

Organic Waste Composter

Specifications

Waste Input Capacity

1,000 kg/day
365 tons/year

Treatment Time

24 hours

Average Wastage Reduction

85%-90%

Power Supply

Three Phase
AC380V, 60Hz

Max. Power Draw

8 kWatt

Power Consumption Reference

Average 900~1000kWh/month
(Actual electricity consumption may vary depending on use)

Heating Method

Electrical Heating

Input Door

Manual top-loading door with magnetic sensors

Off-Load Door

Manual front opening door with magnetic sensors

Safety Features

Mixing Blade automatically stops when doors are detected to be open.
Prominent Emergency Stop.

Dimension

3,651 mm (W) x1,601 mm (D)x 1,876 mm (H)
3,651 x 2,049 x 2,033mm (with lifter)
Weight: 2,500kgs

Machine Material

Stainless Steel 304

Applications

- Resorts
- Municipalities
- Metro Cities
- Industrial Regions

